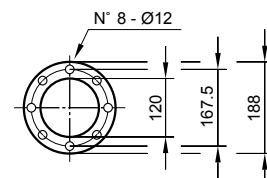
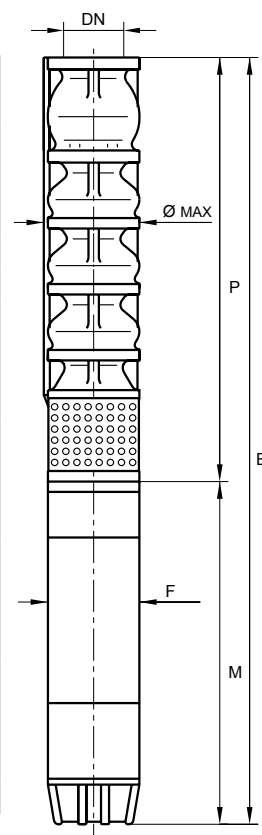


Electropompa sommersa da 8" - 8" Submersible electric pump - Electropompe immergée 8" - 8" Elektrotauchpumpe - Electrobomba sumergible 8"  
Caratteristiche idrauliche - Operating data - Caractéristiques de fonctionnement - Betriebseigenschaften - Datos de servicio

| POMPA<br>PUMP<br>POMPE<br>PUMPE<br>BOMBA | Potenza Motore<br>Motor Power<br>Puiss. Moteur<br>Motorleistung<br>Potencia Motor |       | PORTATA - DELIVERY - DEBIT - FORDERLEISTUNG - CAUDAL   |     |       |       |       |       |      |      |       |      |       |       |       |      |     |
|--|---|-------|--|-----|-------|-------|-------|-------|------|------|-------|------|-------|-------|-------|------|-----|
|  |   |       | U.S.g.p.m.   | 0   | 142,7 | 158,5 | 174,4 | 190,2 | 206  | 222  | 237,8 | 254  | 269,5 | 285,3 | 301,2 | 317  | 333 |
|  |   |       | m <sup>3</sup> /h  | 0   | 32,4  | 36    | 39,6  | 43,2  | 46,8 | 50,4 | 54    | 57,6 | 61,2  | 64,8  | 68,4  | 72   | 76  |
|  |   |       | l/sec  | 0   | 9     | 10    | 11    | 12    | 13   | 14   | 15    | 16   | 17    | 18    | 19    | 20   | 21  |
| HP                                       | kW  | l/min | 0  | 540 | 600   | 660   | 720   | 780   | 840  | 900  | 960   | 1020 | 1080  | 1140  | 1200  | 1260 |     |
| 8B12A/1                                  | 5,5   | 4     | PREVALENZA TOTALE - MANOMETRIC HEAD<br>HAUTEUR MANOMETRIQUE TOTALE<br>MAN. FORDERHOHE - ALTURA MANOMETRICA | 24  | 21    | 20,5  | 20    | 19    | 18   | 17   | 16    | 15   | 13    | 12    | 11    | 10   | 9   |
| 8B12A/2                                  | 10  | 7,5   |  | 51  | 43,5  | 43    | 42    | 40    | 38   | 36   | 34    | 32   | 30    | 28    | 25    | 23   | 20  |
| 8B12A/3                                  | 15  | 11    |  | 75  | 65    | 63    | 61    | 59    | 56   | 53   | 51    | 47   | 43    | 39    | 36    | 32   | 29  |
| 8B12A/4R                                 | 17,5  | 13    |  | 94  | 81    | 79    | 76    | 73    | 69   | 66   | 63    | 59   | 54    | 49    | 44    | 40   | 33  |
| 8B12A/5R                                 | 20  | 15    |  | 109 | 95    | 93    | 90    | 85    | 81   | 78   | 73    | 67   | 60    | 55    | 50    | 43   | 40  |
| 8B12A/6R                                 | 25  | 18,5  |  | 134 | 118   | 114   | 111   | 106   | 101  | 96   | 91    | 84   | 77    | 70    | 63    | 56   | 50  |
| 8B12A/7R                                 | 30  | 22    |  | 160 | 139   | 134   | 130   | 125   | 119  | 112  | 107   | 99   | 91    | 82    | 74    | 66   | 59  |
| 8B12A/8R                                 | 35  | 26    |  | 181 | 162   | 158   | 152   | 145   | 138  | 132  | 126   | 117  | 107   | 98    | 89    | 79   | 70  |
| 8B12A/9R                                 | 40  | 30    |  | 207 | 182   | 177   | 171   | 164   | 156  | 148  | 142   | 132  | 121   | 110   | 100   | 90   | 80  |
| 8B12A/10                                 | 50  | 37    |  | 252 | 219   | 214   | 207   | 199   | 187  | 178  | 170   | 158  | 152   | 139   | 127   | 113  | 99  |
| 8B12A/12                                 | 60  | 45    |  | 303 | 263   | 258   | 249   | 239   | 224  | 213  | 203   | 190  | 182   | 167   | 153   | 136  | 118 |
| 8B12A/14                                 | 70  | 51,5  |  | 354 | 306   | 300   | 290   | 279   | 262  | 249  | 236   | 221  | 212   | 196   | 179   | 159  | 137 |
| 8B12A/15                                 | 75  | 55    |  | 378 | 329   | 321   | 311   | 298   | 280  | 266  | 254   | 238  | 228   | 209   | 190   | 170  | 147 |
| 8B12A/16                                 | 80  | 59    |  | 403 | 351   | 343   | 331   | 318   | 299  | 284  | 271   | 253  | 243   | 223   | 203   | 181  | 156 |
| 8B12A/18                                 | 90  | 66    |  | 455 | 395   | 386   | 373   | 358   | 336  | 320  | 305   | 285  | 273   | 251   | 228   | 204  | 177 |
| 8B12A/20                                 | 100   | 75    |  | 505 | 439   | 428   | 414   | 398   | 374  | 355  | 339   | 317  | 304   | 279   | 254   | 227  | 197 |

↔ Miglior campo prestazionale - Best performance range - Meilleur champ de performances - Bester Leistungsbereich - Mejor campo de trabajo

| DIMENSIONI D'INGOMBRO E PESI - OVERALL DIMENSIONS AND WEIGHTS<br>DIMENSIONS D'ENCOMBREMENT ET POIDS - ABMESSUNGEN UND GEWICHTER - DIMENSIONES Y PESOS |  |      |           |           |           |           |  |                                    |  |     |               |
|---|--|------|-----------|-----------|-----------|-----------|--|------------------------------------|--|-----|---------------|
| POMPA+MOTORE<br>PUMP+MOTOR<br>POMPE+MOTEUR<br>PUMPE+MOTOR<br>BOMBA+MOTOR  | POTENZA MOTORE<br>MOTOR POWER<br>PUISSANCE MOTEUR<br>MOTORLEISTUNG<br>POTENCIA MOTOR |      | E<br>(mm) | P<br>(mm) | M<br>(mm) | F<br>(mm) | PESO - WEIGHT - POID - GEWICHT<br>Kg     |                                    |  | DN  | ø max<br>(mm) |
|   | HP   | KW   |           |           |           |           | POMPA<br>PUMP<br>POMPE<br>PUMPE<br>BOMBA | MOTORE<br>MOTOR<br>MOTEUR<br>MOTOR | TOTALE<br>TOTAL<br>TOTALE<br>GESAMT<br>TOTAL |     |               |
|   |  |      |           |           |           |           |  |                                    |  |     |               |
| 8B12A/1 + PA6   | 5,5  | 4    | 1232      | 607       | 625       | 142       | 40                                       | 43                                 | 83   | 120 | 198           |
| 8B12A/2 + PA6   | 10   | 7,5  | 1403      | 743       | 660       | 142       | 52                                       | 47                                 | 99   |     |               |
| 8B12A/3 + PA6   | 15   | 11   | 1634      | 879       | 755       | 142       | 64                                       | 57                                 | 121  |     |               |
| 8B12A/4R + PA6  | 17,5   | 13   | 1810      | 1015      | 795       | 142       | 76                                       | 61                                 | 137  |     |               |
| 8B12A/5R + PA6  | 20   | 15   | 1996      | 1151      | 845       | 142       | 88                                       | 67                                 | 155  |     |               |
| 8B12A/6R + PA6  | 25   | 18,5 | 2172      | 1287      | 885       | 142       | 100                                      | 71                                 | 171  |     |               |
| 8B12A/7R + PA6  | 30   | 22   | 2388      | 1423      | 965       | 142       | 112                                      | 80                                 | 192  |     |               |
| 8B12A/8R + PA6  | 35   | 26   | 2584      | 1559      | 1025      | 142       | 124                                      | 86                                 | 210  |     |               |
| 8B12A/9R + PA6  | 40   | 30   | 2810      | 1695      | 1115      | 142       | 136                                      | 94                                 | 230  |     |               |
| 8B12A/9R + PA8  | 40   | 30   | 2665      | 1695      | 970       | 189       | 136                                      | 133                                | 269  |     |               |
| 8B12A/10 + PA6  | 50   | 37   | 3046      | 1831      | 1215      | 142       | 148                                      | 106                                | 254  |     |               |
| 8B12A/10 + PA8  | 50   | 37   | 2891      | 1831      | 1060      | 189       | 148                                      | 154                                | 302  |     |               |
| 8B12A/12 + PA8  | 60   | 45   | 3243      | 2103      | 1140      | 189       | 172                                      | 166                                | 338  |     |               |
| 8B12A/14 + PA8  | 70   | 51,5 | 3605      | 2375      | 1230      | 189       | 196                                      | 184                                | 380  |     |               |
| 8B12A/15 + PA8  | 75   | 55   | 3791      | 2511      | 1280      | 189       | 208                                      | 197                                | 405  |     |               |
| 8B12A/16 + PA8  | 80   | 59   | 3997      | 2647      | 1350      | 189       | 220                                      | 208                                | 428  |     |               |
| 8B12A/18 + PA8  | 90   | 66   | 4369      | 2919      | 1450      | 189       | 244                                      | 218                                | 462  |     |               |
| 8B12A/20 + PA8  | 100  | 75   | 4701      | 3191      | 1510      | 189       | 268                                      | 229                                | 497  |     |               |



I dati prestazionali dei motori si trovano all'interno delle brochure specifiche "Motori Sommersi serie PA6-PA8"

The motors performances data are inside the specific brochures "Submersible motors PA6-PA8"

Les données de performances des moteurs se trouvent dans les brochures spécifiques "Moteurs immergés PA6-PA8"

Die Daten der Motorleistungen sind in den spezifischen Broschüren "Unterwassermotoren PA6-PA8"

Los datos de servicio de los motores se encuentran en la parte interior del folleto específico "Motores Sumergible PA6-PA8"



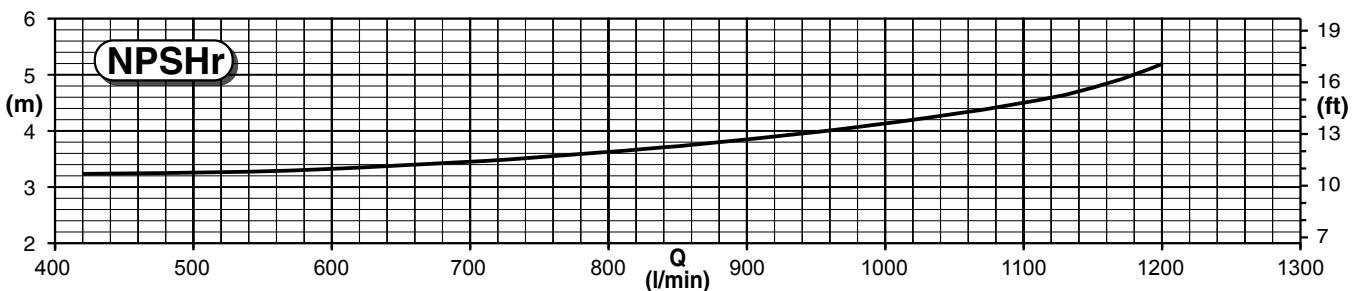
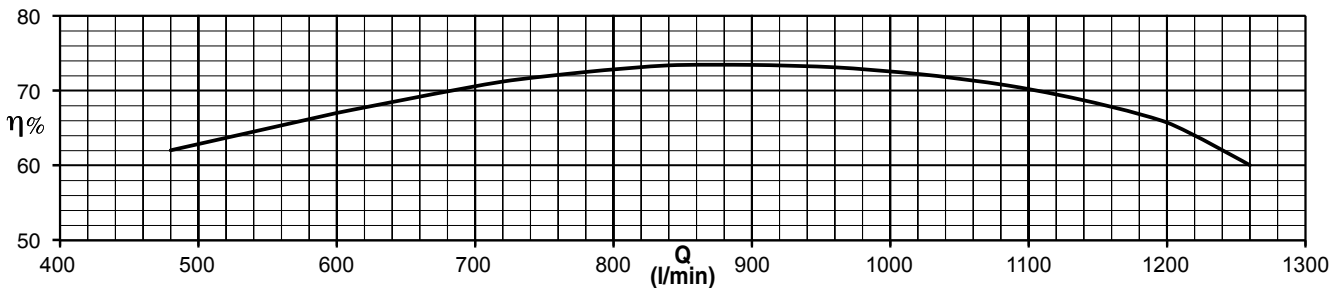
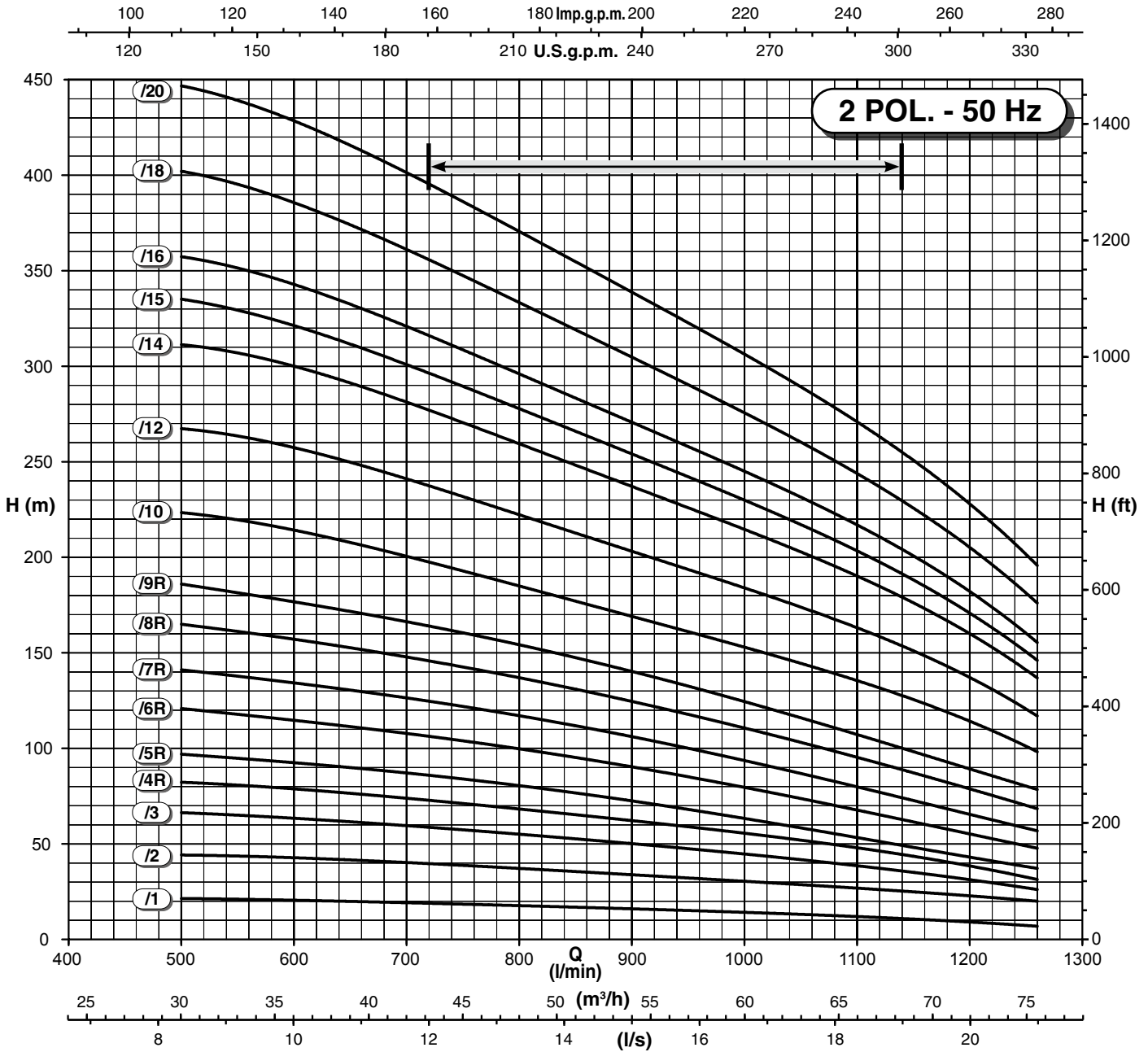
# BIZZI & TEDESCHI

50Hz  
r.p.m. 2900

8"

Serie  
**8B12A**

Elettropompa sommersa da 8" - 8" Submersible electric pump - Electropompe immergée 8" - 8" Elektrotauchpumpe - Electrobomba sumergible 8"  
Caratteristiche idrauliche - Operating data - Caractéristiques de fonctionnement - Betriebseigenschaften - Datos de servicio



$\eta\%$  = Rendimento pompa - Pump efficiency - Rendement de la pompe - Pumpenwirkung - Rendimiento de la bomba